

Macro and Socioeconomic Indicators

GDP (millions of US\$)	2000	2001	2002	2003	2004	2005	2006	2007	2008	2009	2010	2011
PIB (constant)	19,291	19,741	20,504	21,023	21,685	22,392	23,597	25,085	25,908	26,044	26,802	27,839
PIB (current)	19,291	18,703	20,777	21,918	23,965	27,211	30,231	34,113	39,136	37,734	41,341	46,900
National Income (millions of US\$)												
National Income (constant)	24,457	25,571	27,336	28,222	29,286	30,303	31,984	33,808	34,364	34,877	35,540	
National Income (current)	17,855	19,849	22,603	24,121	26,677	30,303	33,819	38,124	43,307	41,198	44,806	
Agricultural Production												
AVA (millions of current \$)	4,402	2,608	2,897	2,906	3,082	3,372	3,405	3,906	4,364	12,501	14,994	17,770
AVA Share of GDP (%)	22.82	15.09	15.17	14.39	13.97	13.38	12.19	12.41	11.97	35.32	38.69	40.51
Annual Variation of the CPI (inflation)	5.98	7.29	8.13	5.60	7.58	9.11	6.56	6.82	11.36	1.86	3.86	6.22
Population												
Total Population	11,237,101	11,512,637	11,800,351	12,098,576	12,404,764	12,717,154	13,034,904	13,358,842	13,690,846	14,033,623	14,389,000	14,757,316
Share of Women in the Total Population (%)	50.91	51.00	51.07	51.13	51.18	51.22	51.25	51.26	51.27	51.27	51.27	51.26
Rural Population	6,169,168	6,272,085	6,379,270	6,489,676	6,601,815	6,714,657	6,822,469	6,930,567	7,039,833	7,151,534	7,291,194	
Rural Population as a Percentage of the Total Population	54.90	54.48	54.06	53.64	53.22	52.80	52.34	51.88	51.42	50.96	50.67	
Rural Agricultural Employment (%)			55.90				53.60					
Poverty and Extreme Poverty (total and rural)												
Poverty (%)			60.20				54.80					
Rural Poverty (%)			68.00				66.50					
Total Extreme Poverty (%)			30.90				29.10					
Rural Extreme Poverty (%)			37.60				42.20					
GINI Coefficient												
National			0.542				0.585					
Rural			0.472				0.526					

Source: World Bank (WDI) except for national income, poverty and extreme poverty, Gini Coefficient taken from ECLAC (CEPALSTAT).

Trade Indicators

Top Agricultural Exports (2011)	Share of Total Agricultural Exports (%)	Value (millions of US\$)
Coffee, coffee husks and skins and coffee substitutes	24.79%	1,063.87
Solid cane or beet sugar and chemically pure sucrose	15.09%	647.76
Bananas, including plantains, fresh or dried	11.10%	476.32
Nutmeg, mace and cardamons	5.80%	249.05
Aceite de palma y sus fracciones, incluso refinado, pero sin modificar químicamente	5.02%	215.63

Source: IICA, based on data from the United Nations , COMTRADE.

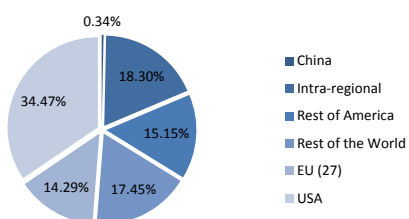
Top Agricultural Imports (2011)	Share of Total Agricultural Imports (%)	Value (millions of US\$)
Maize (corn)	10.08%	234.81
Wheat and meslin	7.61%	177.15
Food preparations, nes	5.57%	129.85
Soya-bean oil-cake and other solid residues	5.25%	122.37
Soya-bean oil, fractions, not chemically modified	4.40%	102.46

Source: IICA, based on data from the United Nations , COMTRADE.

RCA of the Top Agricultural Exports	2000	2001	2002	2003	2004	2005	2006	2007	2008	2009	2010	2011
Coffee, coffee husks and skins and coffee substitutes	6.497	5.985	8.440	9.091	8.355	8.016	8.136	7.911	7.841	8.310	7.897	8.016
Solid cane or beet sugar and chemically pure sucrose	6.150	5.366	6.058	5.287	5.320	8.065	8.658	9.033	8.372	7.936	9.533	8.957
Bananas, including plantains, fresh or dried	7.150	7.191	7.799	8.340	5.958	7.430	7.630	5.392	6.757	7.154	8.063	7.790
Nutmeg, mace and cardamons	5.885	6.554	6.813	7.257	6.945	7.631	8.015	8.070	8.089	8.759	8.503	7.190
Palm oil and its fractions, not chemically modified	2.128	1.561	2.354	2.596	2.513	2.084	7.536	2.069	2.746	2.307	2.216	2.537

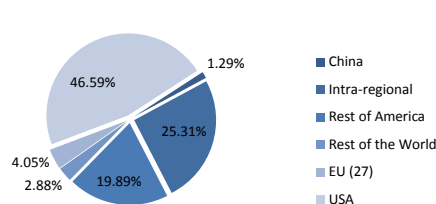
Source: IICA, based on data from the United Nations , COMTRADE.

Agrifood - Top Export Partners



Source: IICA, based on data from the United Nations , COMTRADE.

Agrifood - Top Import Partners



Source: IICA, based on data from the United Nations , COMTRADE.

	2000	2001	2002	2003	2004	2005	2006	2007	2008	2009	2010	2011
Agricultural Trade Balance (US\$ millions)	946.19	473.22	399.43	402.88	348.99	692.72	660.50	1,182.39	1,143.44	1,680.46	1,772.75	1,962.57
Share of Agricultural Exports as Percentage of the Total Exports of Goods (%)	59.04	54.13	60.67	49.48	47.03	35.56	52.63	39.17	39.95	46.58	44.02	42.24
Total Trade Openness Index	39.30	42.83	40.23	42.68	44.83	58.36	42.13	57.55	56.87	49.64	53.92	57.08
Total Trade and Agricultural Openness Index	50.91	82.00	72.42	75.85	78.14	92.93	79.45	108.11	115.44	40.28	37.85	37.26

Source: IICA, based on data from the United Nations , COMTRADE.

Production Indicators

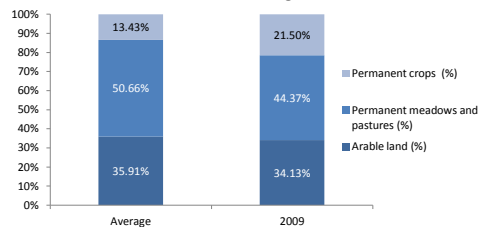
Agricultural Area	Promedio 1980-1989	2009
Agricultural Area (km2)	36,050.0	43,950.0
Agricultural Area per Capita (m2)	4,582.8	3,131.8

Source: FAO, FAOSTAT.

Forests and Woodland and Forest Cover in relation to the Total Area	1990	2009
Forests area (km2)	47,480	37,132
Forest area in relation to Total Area (%)	44%	34%

Source: FAO, FAOSTAT.

Distribution of the Total Agricultural Area



Top Crops (Hectares)	Average 2000-2010	Share of Total Number of Hectares Harvested
Maize	694,476.0	37.21%
Coffee, green	252,633.5	13.54%
Sugar cane	209,099.4	11.20%
Beans, dry	177,136.5	9.49%
Nutmeg, mace, cardamoms	67,306.9	3.61%

Source: IICA, based on data from FAO, FAOSTAT.

Agricultural Labor Productivity	2000	2001	2002	2003	2004	2005	2006	2007	2008	2009	2010	2011
AVA per worker (constant 2000 US\$)	2,950.62	2,804.54	2,792.92	2,720.52	2,704.93	2,708.35	2,689.58	2,806.89	2,783.31	2,839.21	2,779.89	

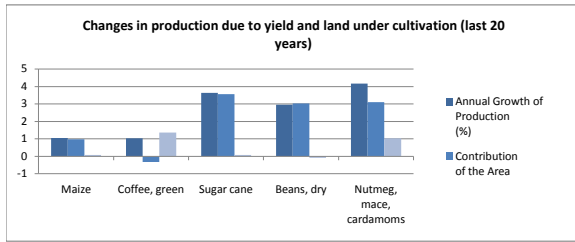
Source: World Bank, WDI.

Economic Yield per Hectare (constant US\$)	2000	2001	2002	2003	2004	2005	2006	2007	2008	2009	2010	2011
AVA Deflated / Hectare Harvested	2,735.89	1,697.95	1,745.95	1,616.46	1,545.90	1,381.35	1,275.49	1,572.05	1,494.06	4,015.52	4,564.30	

Source: IICA, based on data from FAO (FAOSTAT) and World Bank (WDI).

Yield of Principal Crops based on Hectares Planted (tons per hectare)	1990-1995	2005-2010
Maize	1.91	1.94
Coffee, green	0.79	0.99
Sugar cane	92.94	93.28
Beans, dry	0.79	0.76
Nutmeg, mace, cardamoms	0.29	0.35

Source: IICA, based on data from FAO (FAOSTAT).



Agricultural area irrigated in relation to the Total Agricultural Area	2000	2001	2002	2003	2004	2005	2006	2007	2008	2009	2010	2011
Irrigated Area (%)	3.85%	4.14%	4.42%	3.95%	4.17%	4.38%	4.65%	4.48%	4.74%	4.55%		

Source: ECLAC, CEPALSTAT.

Food Security Indicators

Prevalence of Undernourishment

	1995-1997	2006-2008
Prevalence of Undernourishment (% of total population)	20	22

Source: FAO, FAOSTAT.

Net Food Exports	2000	2001	2002	2003	2004	2005	2006	2007	2008	2009	2010	2011
Net Food Exports (US\$ millions)	917	467	436	446	429	753	724	1,261	1,280	1,759	1,877	2,107

Source: IICA, based on data from the United Nations , COMTRADE.

Consumer Price Index (CPI) and Food CPI (base year 2005 = 100)	2000	2001	2002	2003	2004	2005	2006	2007	2008	2009	2010	2011
CPI of Food	62.32	68.53	75.75	80.11	88.33	100.00	107.14	117.73	135.52	140.94	146.24	161.28
CPI of Basic Basket	69.54	74.61	80.68	85.20	91.65	100.00	106.56	113.83	126.76	129.11	134.10	141.92

Source: ECLAC, CEPALSTAT.

Domestic Food Supply per Capita (kg per year)

	2000	2001	2002	2003	2004	2005	2006	2007	2008	2009	2010	2011
Vegetable oils	15.91	17.37	20.23	17.99	17.45	19.81	21.42	16.24	26.30	24.85	25.36	
Meat	22.19	22.93	25.96	25.57	26.66	27.21	25.33	28.08	27.80	27.86	27.66	
Cereals	160.09	187.01	191.41	178.66	180.79	187.99	193.36	210.12	202.72	208.34	202.53	
Fruits	84.37	90.46	97.42	83.89	156.20	67.30	125.67	119.72	141.11	134.29	151.25	
Vegetables	52.37	63.22	75.51	91.72	76.91	61.11	96.30	75.06	73.96	67.36	71.90	
Milk			30.57	33.66	33.78	33.51	33.57		33.95	33.38	32.91	
Roots and tubers	14.24	14.81	20.10	28.38	32.31	31.13	30.05	28.49	30.06	31.70	32.52	

Source: IICA, based on data from the United Nations (COMTRADE), FAO (FAOSTAT) and World Bank (WDI).

Share of Imports in the Domestic Food Supply (%)

	2000	2001	2002	2003	2004	2005	2006	2007	2008	2009	2010	2011
Vegetable oils	40.30	45.72	39.07	43.09	44.99	45.74	28.75	24.23	32.89	29.66	34.29	
Meat	5.95	6.05	9.38	9.62	17.88	18.59	11.46	18.48	17.12	18.34	20.74	
Cereals	35.91	44.92	49.25	47.12	48.27	51.96	49.52	45.76	41.53	40.08	40.94	
Fruits	3.66	4.00	5.23	4.87	3.83	4.26	4.78	5.93	4.22	3.79	3.84	
Vegetables	1.60	1.54	1.47	1.14	1.26	1.94	1.81	1.54	1.73	2.78	3.57	
Milk			2.12	2.96	4.09	2.84	2.43		3.03	3.83	4.40	
Roots and tubers	0.64	0.61	1.21	0.82	1.08	1.10	0.86	0.91	0.78	0.99	0.84	

Source: IICA, based on data from the United Nations (COMTRADE) and FAO (FAOSTAT).

Share of Imports in the Domestic Caloric Supply (%)

	2000	2001	2002	2003	2004	2005	2006	2007	2008	2009	2010	2011
Caloric Dependence (%)			41.69	40.42	40.80	45.28	39.04		34.83	33.50	34.81	

Source: IICA, based on data from the United Nations (COMTRADE) and FAO (FAOSTAT).

International Monetary Reserves Measured in Months of Food Imports

	2000	2001	2002	2003	2004	2005	2006	2007	2008	2009	2010	2011
Months of Food Imports	38.7	38.3	38.5	45.4	48.3	43.3	56.1	40.0	33.7	43.6	42.9	37

Source: IICA, based on data from the United Nations (COMTRADE) y World Bank (WDI).

	2000	2001	2002	2003	2004	2005	2006	2007	2008	2009	2010	2011
Agricultural Deflator / GDP Deflator	100.0	61.8	60.9	58.0	55.7	54.2	51.3	52.4	52.2	150.2	169.7	177.7
Agricultural Deflator	100.0	58.6	61.7	60.4	61.5	65.9	65.7	71.2	78.9	217.7	261.7	299.3
GDP Deflator	100.0	94.7	101.3	104.3	110.5	121.5	128.1	136.0	151.1	144.9	154.2	168.5

Source: IICA, based on data from World Bank, WDI.

	2000	2001	2002	2003	2004	2005	2006	2007	2008	2009	2010	2011
AVA Deflator Adjusted by GDP Deflator (millions of US\$)	4,402.3	2,753.1	2,859.0	2,787.5	2,789.2	2,774.9	2,658.1	2,872.6	2,888.8	8,628.5	9,720.9	10,548

Source: IICA, based on data from World Bank, WDI.

External Terms of Trade (ETT) for Agriculture (2005=100)

	2000	2001	2002	2003	2004	2005	2006	2007	2008	2009	2010	2011
ETT Agr	113.51	99.25	107.68	97.55	159.58	100.00	95.59	97.18	88.96	111.11	117.25	114.56

Source: IICA, based on data from the United Nations, COMTRADE.

External Terms of Trade (2005=100)

	2000	2001	2002	2003	2004	2005	2006	2007	2008	2009	2010	2011
Terms of trade for goods and services	104.5	103.1	103.4	101.2	100.1	100.0	99.0	97.6	95.2	102.0	101.1	100.5

Source: World Bank, WDI.