

Macro and Socioeconomic Indicators

GDP (millions of US\$)	2000	2001	2002	2003	2004	2005	2006	2007	2008	2009	2010	2011
PIB (constant)	3,665	3,626	3,617	3,630	3,502	3,565	3,646	3,768	3,800	3,909	3,697	3,904
PIB (current)	3,665	3,508	3,215	2,826	3,661	4,154	4,880	5,971	6,408	6,470	6,635	7,346
National Income (millions of US\$)												
National Income (constant)	5,178	5,125	5,093	5,255	5,132	5,409	5,540	5,776	5,512	5,854	6,771	
National Income (current)	4,416	4,248	3,955	3,729	4,642	5,409	6,247	7,491	8,149	8,127	9,828	
Agricultural Production												
AVA (millions of current \$)	Data not available											
AVA Share of GDP (%)	Data not available											
Annual Variation of the CPI (inflation)	13.71	14.17	9.85	39.28	22.81	15.73	13.07	8.53	15.52	-0.01	5.70	8.41
Population												
Total Population	8,645,371	8,791,931	8,935,252	9,075,399	9,212,634	9,347,262	9,479,136	9,608,453	9,736,332	9,864,241	9,993,000	10,123,787
Share of Women in the Total Population (%)	50.46	50.45	50.45	50.44	50.44	50.43	50.42	50.42	50.41	50.40	50.40	50.40
Rural Population	5,567,619	5,537,158	5,500,541	5,457,945	5,409,659	5,355,981	5,300,733	5,240,450	5,175,834	5,107,704	4,797,639	
Rural Population as a Percentage of the Total Population	64.40	62.98	61.56	60.14	58.72	57.30	55.92	54.54	53.16	51.78	48.01	
Rural Agricultural Employment (%)	Data not available											
Poverty and Extreme Poverty (total and rural)												
Poverty (%)	Data not available											
Rural Poverty (%)	Data not available											
Total Extreme Poverty (%)	Data not available											
Rural Extreme Poverty (%)	Data not available											
GINI Coefficient												
National	Data not available											
Rural	Data not available											

Source: World Bank (WDI) except for national income, poverty and extreme poverty, Gini Coefficient taken from ECLAC (CEPALSTAT).

Trade Indicators

Top Agricultural Exports	Share of Total Agricultural Exports (%)	Value (millions of US\$)
Data not available		

Source: IICA, based on data from the United Nations , COMTRADE.

Top Agricultural Imports	Share of Total Agricultural Imports (%)	Value (millions of US\$)
Data not available		

Source: IICA, based on data from the United Nations , COMTRADE.

RCA of the Top Agricultural Exports	2000	2001	2002	2003	2004	2005	2006	2007	2008	2009	2010	2011
	Data not available											

Source: IICA, based on data from the United Nations , COMTRADE.

Agrifood - Top Export Partners

Data not available

- China
- Intra-regional
- Rest of America
- Rest of the World
- EU (27)
- USA

Source: IICA, based on data from the United Nations , COMTRADE.

Agrifood - Top Import Partners

Data not available

- China
- Intra-regional
- Rest of America
- Rest of the World
- EU (27)
- USA

Source: IICA, based on data from the United Nations , COMTRADE.

	2000	2001	2002	2003	2004	2005	2006	2007	2008	2009	2010	2011
Agricultural Trade Balance (US\$ millions)	Data not available											
Share of Agricultural Exports as Percentage of the Total Exports of Goods (%)	Data not available											
Total Trade Openness Index	Data not available											
Total Trade and Agricultural Openness Index	Data not available											

Source: IICA, based on data from the United Nations , COMTRADE.

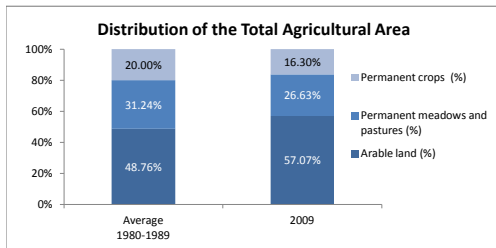
Production Indicators

Agricultural Area	Promedio 1980-1989	2009
Agricultural Area (km2)	15,997.0	18,400.0
Agricultural Area per Capita (m2)	2,529.3	1,865.3

Source: FAO, FAOSTAT.

Forests and Woodland and Forest Cover in relation to the Total Area	1990	2009
Forests area (km2)	1,160	1,018
Forest area in relation to Total Area (%)	4%	4%

Source: FAO, FAOSTAT.



Top Crops (Hectares)	Average 2000-2010	Share of Total Number of Hectares Harvested
Maize	281,709.1	24.27%
Sorghum	118,763.6	10.23%
Cassava	91,104.6	7.85%
Beans, dry	70,877.5	6.11%
Coffee, green	68,671.3	5.92%

Source: IICA, based on data from FAO, FAOSTAT.

Agricultural Labor Productivity	2000	2001	2002	2003	2004	2005	2006	2007	2008	2009	2010	2011
AVA per worker (constant 2000 US\$)	Data not available											

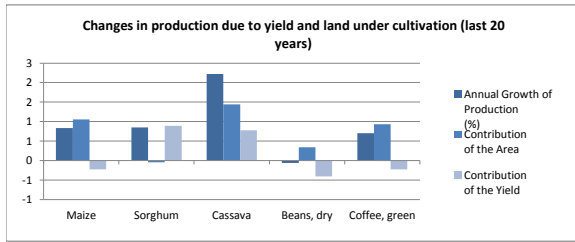
Source: World Bank, WDI.

Economic Yield per Hectare (constant US\$)	2000	2001	2002	2003	2004	2005	2006	2007	2008	2009	2010	2011
AVA Deflated / Hectare Harvested	Data not available											

Source: IICA, based on data from FAO (FAOSTAT) and World Bank (WDI).

Yield of Principal Crops based on Hectares Planted (tons per hectare)		
Top Crops	1990-1995	2005-2010
Maize	0.80	0.79
Sorghum	0.77	0.89
Cassava	4.00	4.57
Beans, dry	0.70	0.66
Coffee, green	0.48	0.48

Source: IICA, based on data from FAO (FAOSTAT).



Agricultural area irrigated in relation to the Total Agricultural Area	2000	2001	2002	2003	2004	2005	2006	2007	2008	2009	2010	2011
Irrigated Area (%)	5.44%	5.51%	5.51%	5.51%	5.51%	5.51%	5.51%	4.92%	5.20%	5.00%		

Source: ECLAC, CEPALSTAT.

Food Security Indicators

Prevalence of Undernourishment

	1995-1997	2006-2008
Prevalence of Undernourishment (% of total population)	60	57

Source: FAO, FAOSTAT.

Net Food Exports	2000	2001	2002	2003	2004	2005	2006	2007	2008	2009	2010	2011
Net Food Exports (US\$ millions)	Data not available											

Source: IICA, based on data from the United Nations , COMTRADE.

Consumer Price Index (CPI) and Food CPI (base year 2005 = 100)	2000	2001	2002	2003	2004	2005	2006	2007	2008	2009	2010	2011
CPI of Food	36.34	41.97	46.31	63.29	85.75	100.00	114.17	124.01	148.61	144.73	151.97	166.83
CPI of Basic Basket	40.51	46.25	50.81	70.77	86.91	100.00	113.24	122.84	141.91	141.89	149.97	161.83

Source: ECLAC, CEPALSTAT.

Domestic Food Supply per Capita (kg per year)	2000	2001	2002	2003	2004	2005	2006	2007	2008	2009	2010	2011
Vegetable oils												
Meat												
Cereals												
Fruits												
Vegetables												
Milk												
Roots and tubers												

Source: IICA, based on data from the United Nations (COMTRADE), FAO (FAOSTAT) and World Bank (WDI).

Share of Imports in the Domestic Food Supply (%)	2000	2001	2002	2003	2004	2005	2006	2007	2008	2009	2010	2011
Vegetable oils												
Meat												
Cereals												
Fruits												
Vegetables												
Milk												
Roots and tubers												

Source: IICA, based on data from the United Nations (COMTRADE) and FAO (FAOSTAT).

Share of Imports in the Domestic Caloric Supply (%)	2000	2001	2002	2003	2004	2005	2006	2007	2008	2009	2010	2011
Caloric Dependence (%)	Data not available											

Source: IICA, based on data from the United Nations (COMTRADE) and FAO (FAOSTAT).

International Monetary Reserves Measured in Months of Food Imports	2000	2001	2002	2003	2004	2005	2006	2007	2008	2009	2010	2011
Months of Food Imports	Data not available											

Source: IICA, based on data from the United Nations (COMTRADE) y World Bank (WDI).

Agricultural Deflator / GDP Deflator	2000	2001	2002	2003	2004	2005	2006	2007	2008	2009	2010	2011
Agricultural Deflator												
GDP Deflator	100.0	96.7	88.9	77.9	104.5	116.5	133.8	158.5	168.6	165.5	179.5	188.2

Source: IICA, based on data from World Bank, WDI.

AVA Deflator Adjusted by GDP Deflator (millions of US\$)	2000	2001	2002	2003	2004	2005	2006	2007	2008	2009	2010	2011
	Data not available											

Source: IICA, based on data from World Bank, WDI.

External Terms of Trade (ETT) for Agriculture (2005=100)	2000	2001	2002	2003	2004	2005	2006	2007	2008	2009	2010	2011
ETT Agr	Datos no disponibles											

Source: IICA, based on data from the United Nations, COMTRADE.

External Terms of Trade (2005=100)	2000	2001	2002	2003	2004	2005	2006	2007	2008	2009	2010	2011
Terms of trade for goods and services	105.3	103.9	101.2	99.3	100.6	100.0	98.5	101.0	82.3	97.8	97.6	89.2

Source: World Bank, WDI.